

## Level 17/1710/87 Liverpool Street Sydney NSW

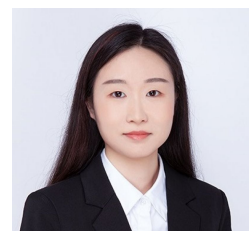


- \* Approx. 72sqm internal area plus a car space and a storage
- \* 4 partitioned rooms
- \* 1 partitioned room with a separate entrance
- \* Quality fit out
- \* Individual air conditioning
- \* Access to World Tower resort facilities (swimming pool, gym, sauna etc)
- \* Minutes to Town Hall, Museum, Local Courts, Chinatown and Darling Harbour
- \* Affordable rent

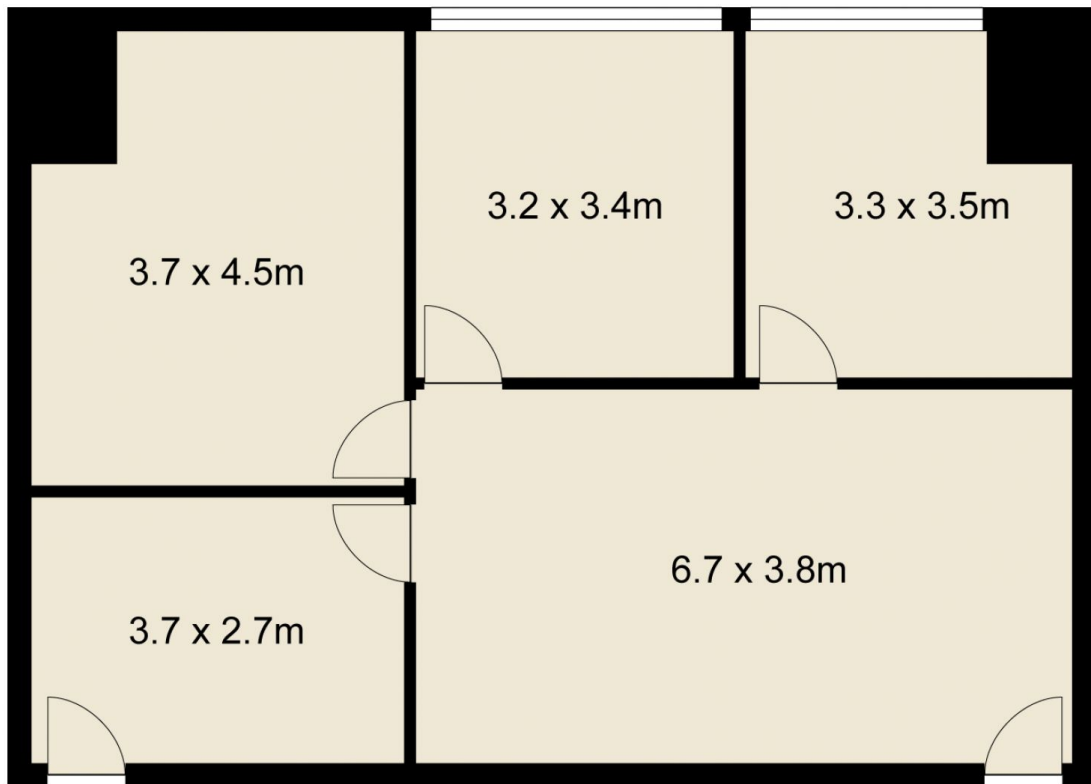
87 Liverpool Street is the commercial section of the prominent World Tower complex and adjacent to the prestigious World Square retail and commercial

[For full version visit the website](https://www.drakeproperty.com/lease/nsw/sydney-city/sydney/commercial/offices/8186651)

**Type** : Offices  
**Price** : Contact Agent  
**Building Size** : 72 sqm  
**View** : <https://www.drakeproperty.com/lease/nsw/sydney-city/sydney/commercial/offices/8186651>



**Joy Huang**  
02 9283 6280



Scale in metres. Indicative only. Dimensions are approximate. All information contained herein is gathered from sources we believe to be reliable. However we cannot guarantee its accuracy and interested persons should rely on their own enquiries.

1710, 87 Liverpool Street, Sydney