

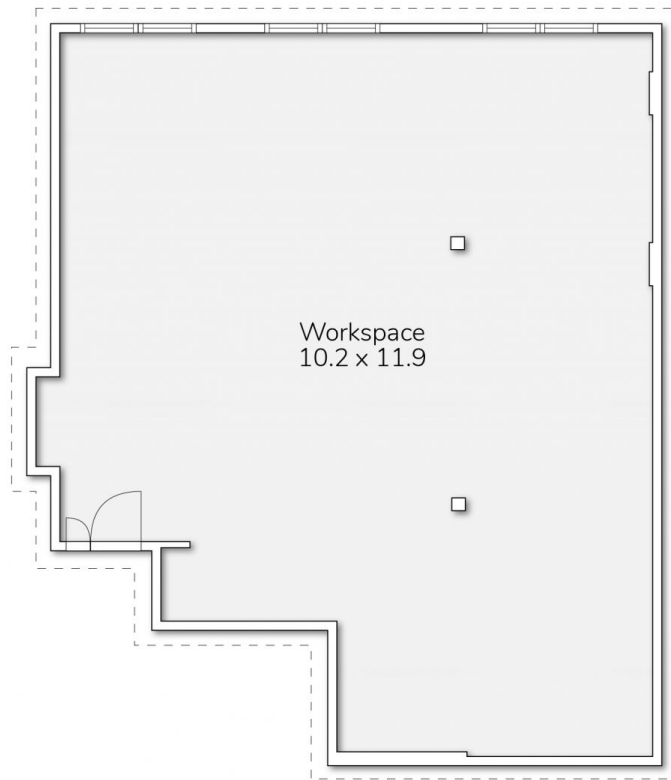
## Level 1/6/2-12 Foveaux Street Surry Hills NSW

2 - 12 Foveaux Street is a converted warehouse style office building located at the corner of Mary Street close to Central Station. The building offers on - site building management and excellent proximity to public transport, cafes, bars and eateries

- \* Approx. 106m2 Open Plan
- \* Asking rent \$6,400 per month + GST
- Garbage Fee: \$110 per month + GST
- \* Extra High Ceilings
- \* Internal Kitchen
- \* Natural Light
- \* Polished Timber Floor
- \* A minute's walk from Central station
- \* Close to all restaurants and bars

**Type** : Offices  
**Price** : \$6,400 plus GST pm  
**Building Size** : 106 sqm  
**View** : <https://www.drakeproperty.com/lease/nsw/eastern-suburbs/surry-hills/commercial/offices/8172537>

[For full version visit the website](https://www.drakeproperty.com)



SUITE 6/1-2 FOVEAUX STREET, SURRY HILLS

Total 106m<sup>2</sup>

This floor plan is for marketing purposes only. Dimensions and layout are approximate. Mountfort Media gives no guarantee or warranty over the accuracy of this plan.