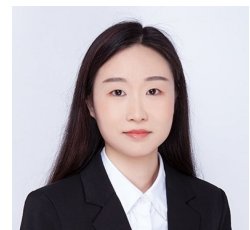


Level 17/1709/87 Liverpool Street Sydney NSW

- * Approx. 56 sqm
- * One partitioned room and open space
- * Quality fit out
- * Brand new carpet tiles (not the one in the picture)
- * Individual air conditioning
- * Access to World Tower resort facilities (swimming pool, gym, sauna etc)
- * Minutes to Town Hall, Museum, Courts, Chinatown and Darling Harbour

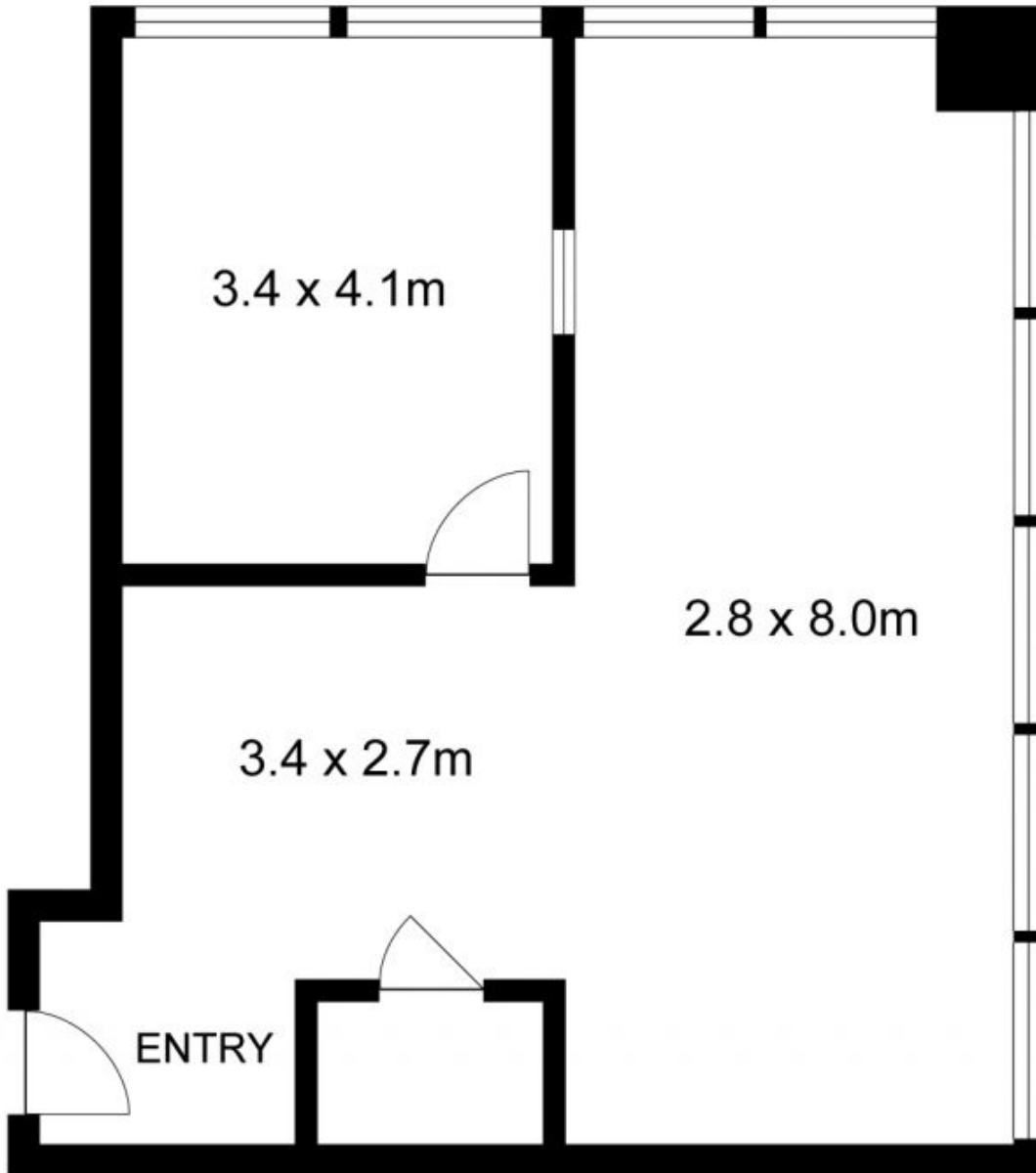
87 Liverpool Street is the commercial section of the prominent World Tower complex and adjacent to the prestigious World Square retail and commercial development. High quality finishes include three lifts, security access, separately air-conditioned suites with

Type : Offices
Price : Contact Agent
Building Size : 56 sqm
View : <https://www.drakeproperty.com/sale/nsw/sydney-city/sydney/commercial/offices/8140438>



Joy Huang
02 9283 6280

[For full version visit the website](#)



Scale in metres. Indicative only. Dimensions are approximate. All information contained herein is gathered from sources we believe to be reliable. However we cannot guarantee its accuracy and interested persons should rely on their own enquiries.

Suite 1709/87 Liverpool Street, Sydney