

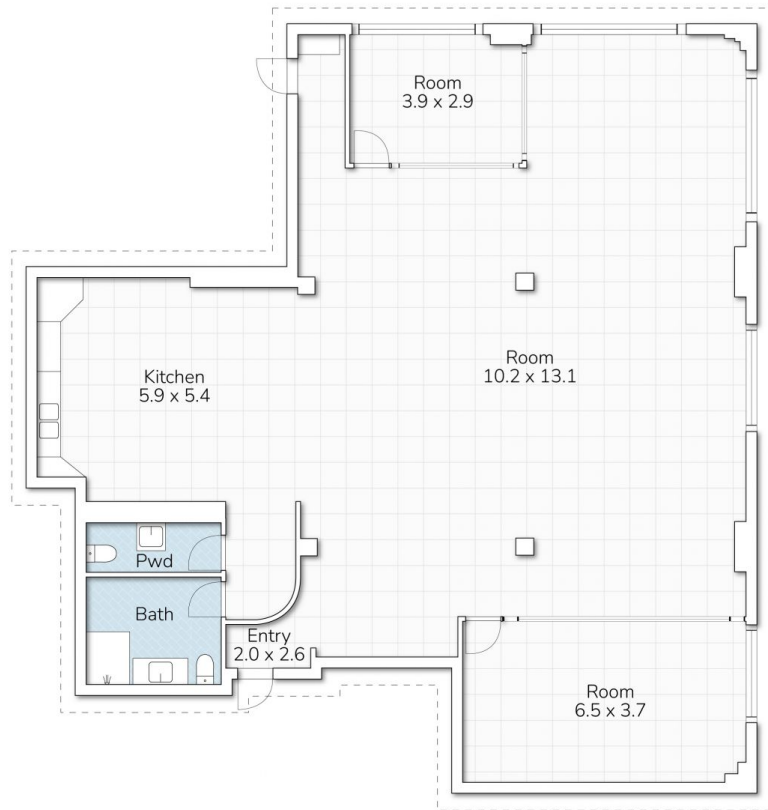


Level 3/20A/21 Mary Street Surry Hills NSW

- * Approx. 210m²
- * Rent: \$12,400 per month plus GST
- Garbage Fee: \$200 per month plus GST
- * Two glass partitioned rooms and open space
- * Private internal modern kitchen, bathroom and shower
- * Less than a minute walk to Central Station, light rail and bus stop

Type : Offices
Price : \$12,400 plus GST pm
Building Size : 210 sqm
View : <https://www.drakeproperty.com/lease/nsw/eastern-suburbs/surry-hills/commercial/offices/8139244>

Please contact David on 0492 929 791 for inspections.



20A/3-21 MARY STREET, SURRY HILLS



Total 210m²

This floor plan is for marketing purposes only. Dimensions and layout are approximate. Mountfort Media gives no guarantee or warranty over the accuracy of this plan.