



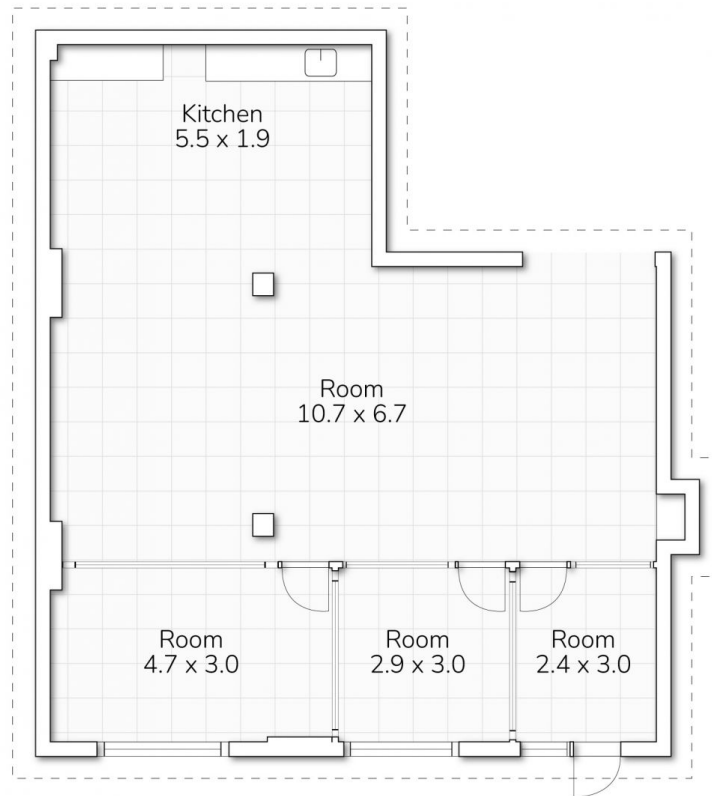
Level 5/7/2-12 Foveaux Street Surry Hills NSW

2 - 12 Foveaux Street is a converted warehouse style office building located at the corner of Mary Street close to Central Station. The building offers on - site building management and excellent proximity to public transport, cafes, bars and eateries

- * Approx. 104sqm
- * Three partitioned rooms and open space
- * Private kitchen
- * Extra high ceilings
- * Ample natural light
- * Polished timber floor & quality fit out
- * A minute's walk from Central Station
- * Close to all restaurants and bars

Type	: Offices
Price	: \$5,950 plus GST pm
Building Size	: 104 sqm
View	: https://www.drakeproperty.com/lease/nsw/eastern-suburbs/surry-hills/commercial/offices/8115877

[For full version visit the website](https://www.drakeproperty.com)



7/5-2 FOVEAUX STREET, SURRY HILLS



Total 104m²

This floor plan is for marketing purposes only. Dimensions and layout are approximate. Mountfort Media gives no guarantee or warranty over the accuracy of this plan.