



## 101/276 Pitt Street Sydney NSW

Contemporary style, modern office in "McArdle Legal House" is offered for sale. With close proximity to Town Hall, Museum, Local Courts and World Square, it will appeal to small or medium size, professional practice searching for quality and convenience.

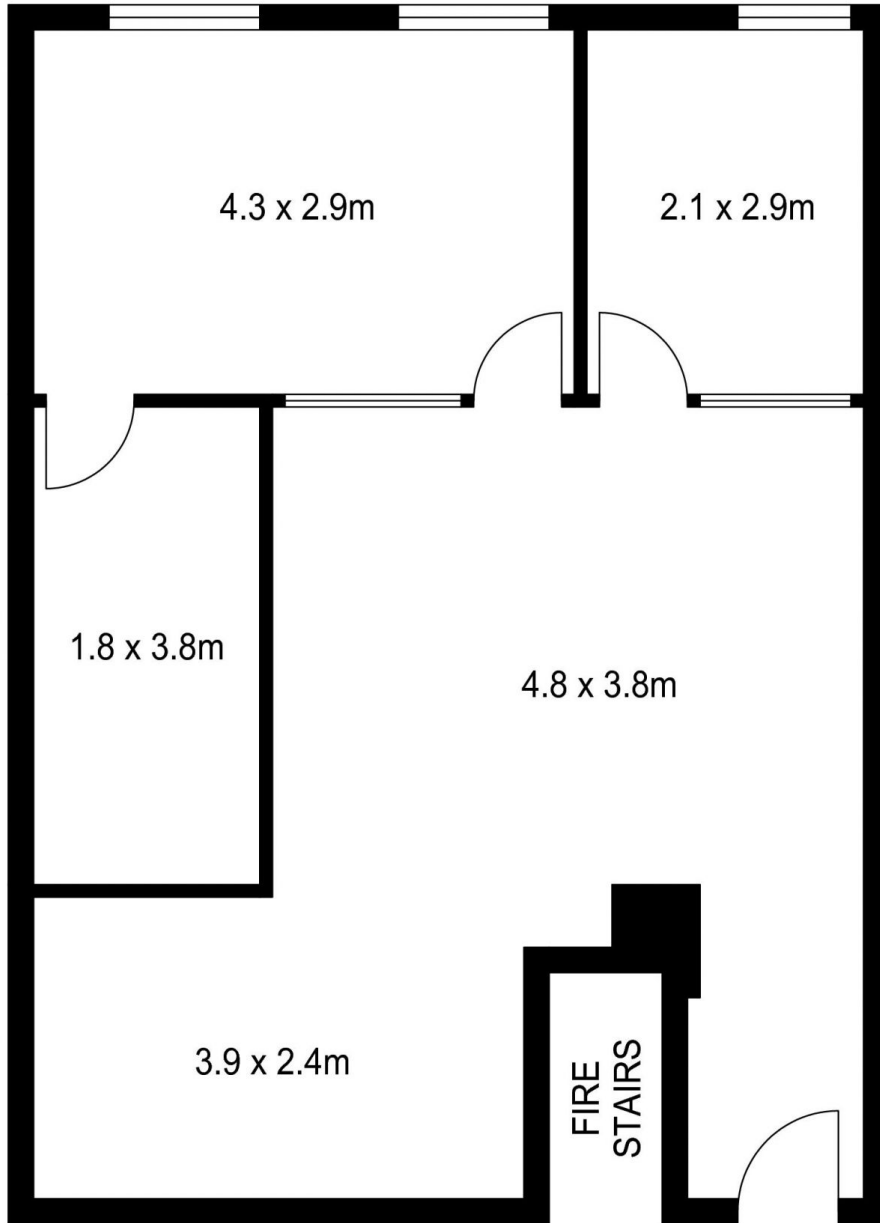
It features:

- \* Approx. 59m<sup>2</sup>
- \* Two partitioned rooms and one board room and one manager room.
- \* Reception plus open area
- \* Prime Location Close to Town Hall, Hyde Park, QVB
- \* Secure and exceptionally well maintained building

McArdle Legal House, a 13-storey office building with

[For full version visit the website](https://www.drakeproperty.com/sale/nsw/sydney-city/sydney/commercial/offices/8113156)

<b>Type</b>	: Offices
<b>Price</b>	: Contact Agent
<b>Building Size</b>	: 59 sqm
<b>View</b>	: <a href="https://www.drakeproperty.com/sale/nsw/sydney-city/sydney/commercial/offices/8113156">https://www.drakeproperty.com/sale/nsw/sydney-city/sydney/commercial/offices/8113156</a>



INT: 59 m<sup>2</sup>

Scale in metres. Indicative only. Dimensions are approximate. All information contained herein is gathered from sources we believe to be reliable. However we cannot guarantee its accuracy and interested persons should rely on their own enquiries.



Suite 1.01 / 276 Pitt Street, Sydney