

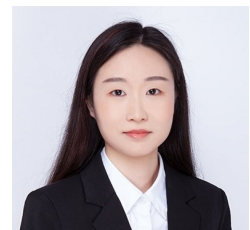
## Level 16/1612/87 Liverpool Street Sydney NSW

- \* Approx. 60sqm
- \* Two partitioned rooms, open space and balcony
- \* Quality fit out
- \* Individual air conditioning
- \* Access to World Tower resort facilities (swimming pool, gym, sauna etc)
- \* Minutes to Town Hall, Museum, Local Courts, Chinatown and Darling Harbour

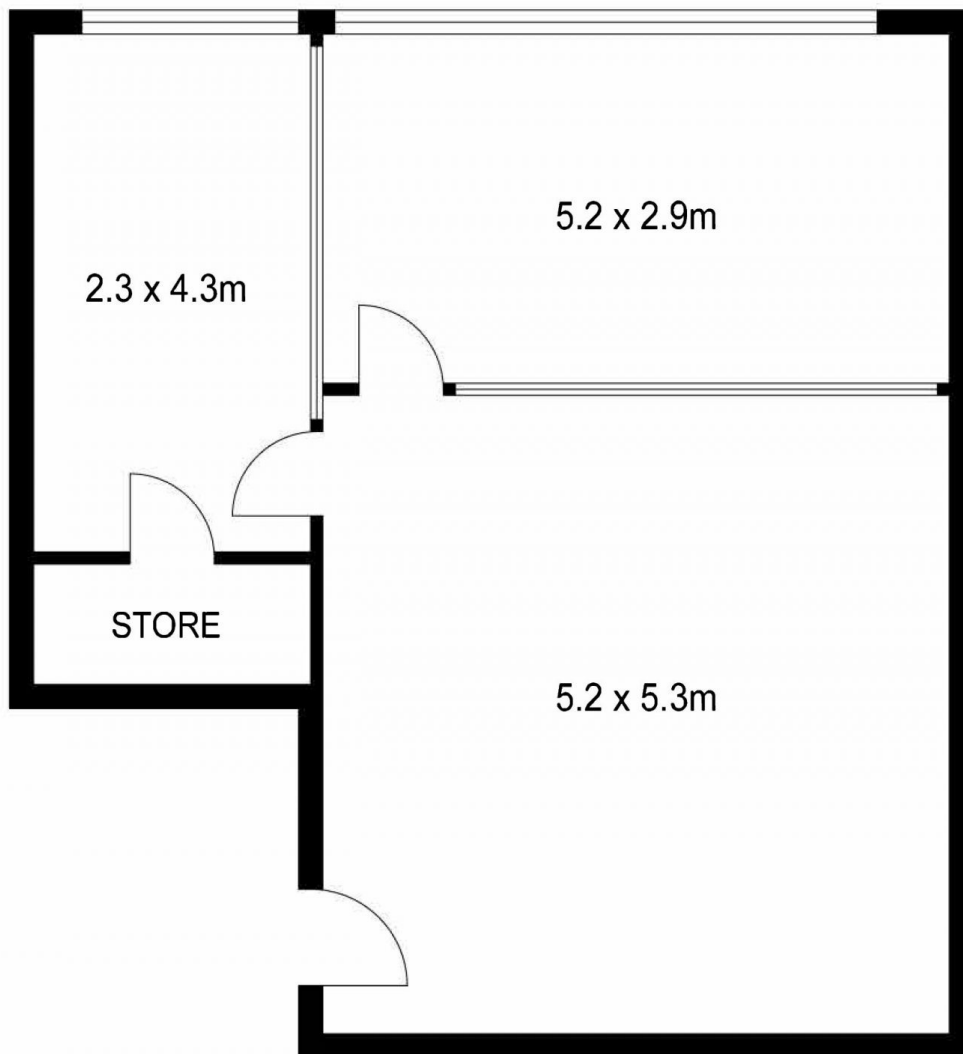
87 Liverpool Street is the commercial section of the prominent World Tower complex and adjacent to the prestigious World Square retail and commercial development. High quality finishes include three lifts, security access, separately air-conditioned suites with intercom, male and female amenities and common kitchen.

[For full version visit the website](https://www.drakeproperty.com/sale/nsw/sydney-city/sydney/commercial/offices/8107832)

**Type** : Offices  
**Price** : Contact Agent  
**Building Size** : 60 sqm  
**View** : <https://www.drakeproperty.com/sale/nsw/sydney-city/sydney/commercial/offices/8107832>



**Joy Huang**  
02 9283 6280



INT: 60 m<sup>2</sup>

Scale in metres. Indicative only. Dimensions are approximate. All information contained herein is gathered from sources we believe to be reliable. However we cannot guarantee its accuracy and interested persons should rely on their own enquiries.

1612/87 Liverpool Street, Sydney