



Level 1/103/661 George Street Sydney NSW

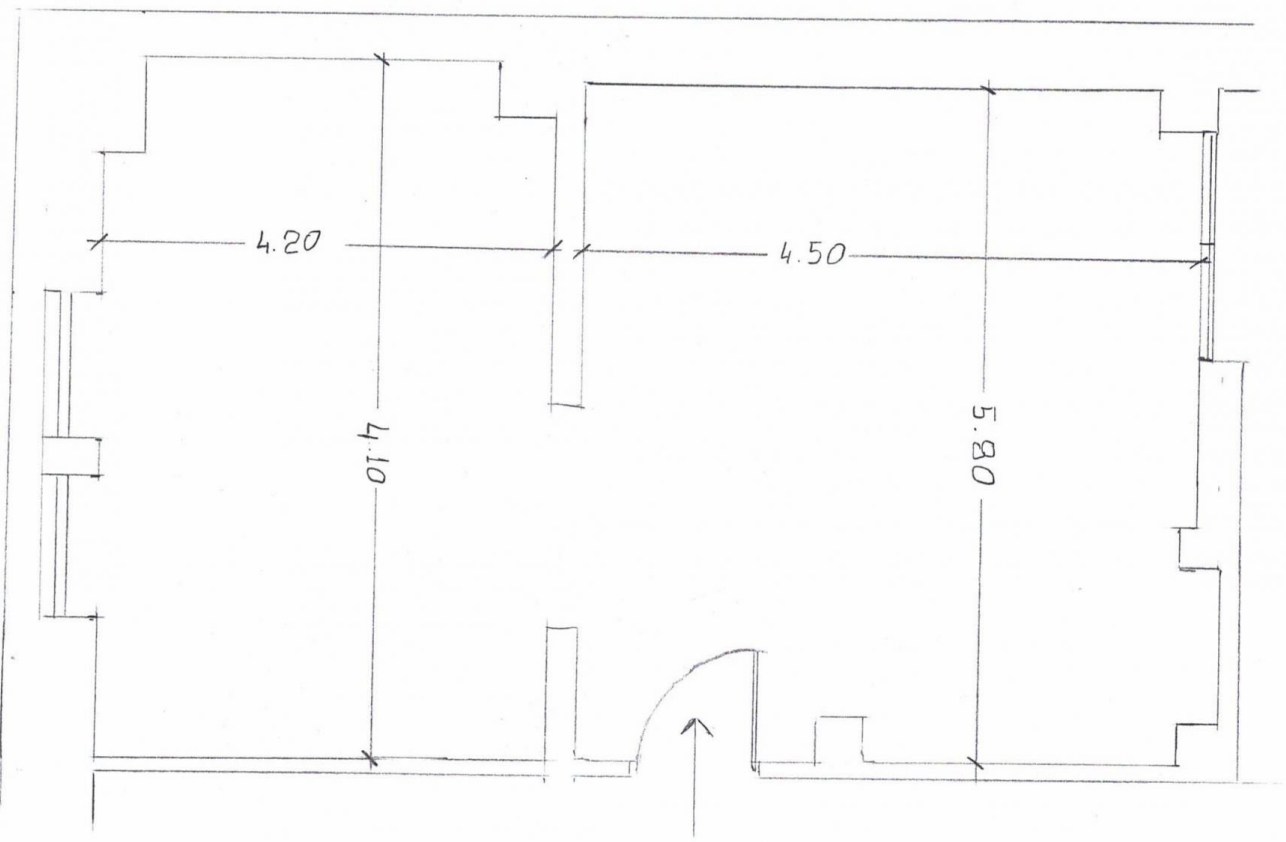
- * Approx. 43.32sqm
- * Rent: \$1,900 per month plus GST
- Garbage: \$75 per month plus GST
- Electricity: \$155 per month plus GST
- * Lift and stair access
- * Toilets in common area
- * Suitable for general offices, PTE, private tutoring and upper floor retail.
- * Close to Chinatown, Market City, UTS, Central Station etc

Please call David on 0492 92 9791 or Joy on 0420 314 838 for more information or arranging inspections.

Price : \$1,900 plus GST per month
Building Size : 43 sqm
View : <https://www.drakeproperty.com/lease/nsw/sydney-city/sydney/commercial/offices/8044581>



Joy Huang
02 9283 6280



GEORGE ST. 661
LEVEL 1
SUITE 103
SQM: 43.32