

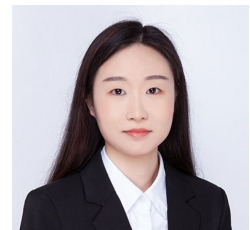
Level 1/103/135 Macquarie Street Sydney NSW

- * Approx. 46m2
- * 3 partitioned rooms
- * Great natural light
- * Water basin
- * Great location, close to Circular Quay, Martin Place and the Domain
- * Suitable for professional or medical use
- * Tenanted property

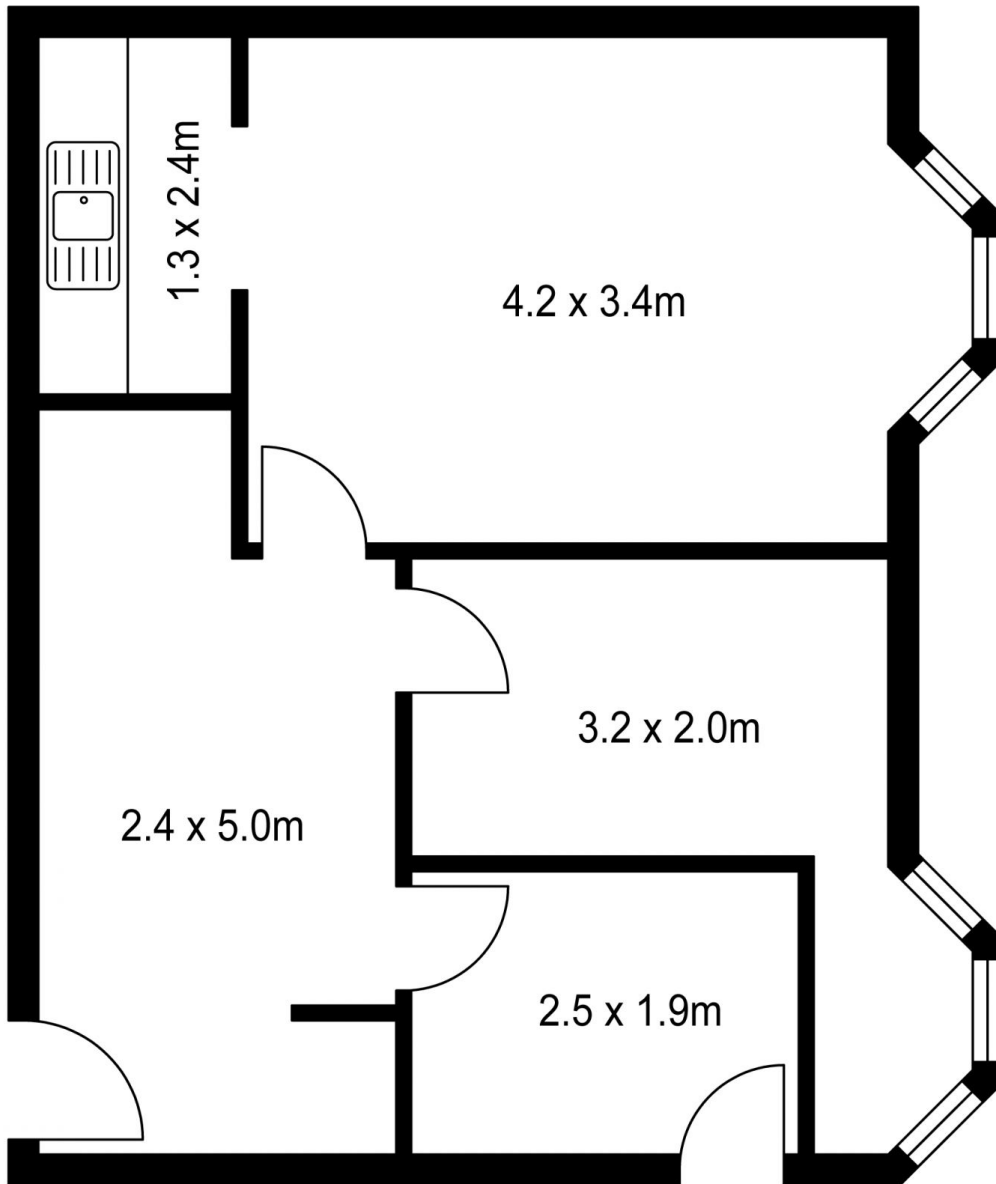
Price : \$620,000
Building Size : 46 sqm
View : <https://www.drakeproperty.com/sale/nsw/sydney-city/sydney/commercial/offices/7998738>

BMA House, a 13-storey brick building completed 1930, architects Fowell and Mansfield, winning a RIBA Bronze Medal in 1933 and a RIBA Award for Street Architecture in 1935, refurbished in late 1990.

For more information or arranging inspections, please contact David Shao on 0492 929 791.



Joy Huang
02 9283 6280



INT: 46 m²

Scale in metres. Indicative only. Dimensions are approximate. All information contained herein is gathered from sources we believe to be reliable. However we cannot guarantee its accuracy and interested persons should rely on their own enquiries.



Suite 1.03 / 135 Macquarie Street, Sydney