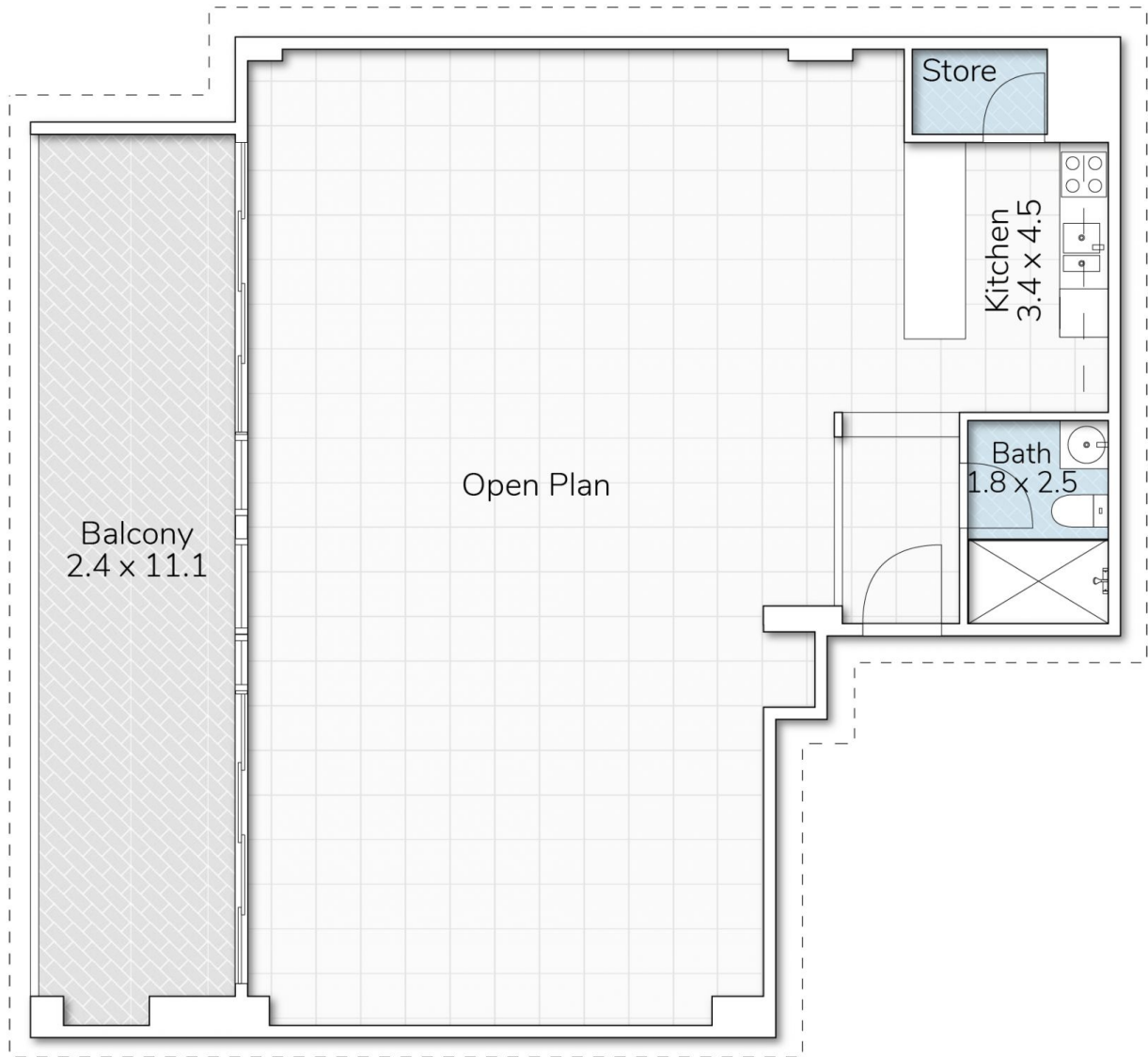


Level GF/1/21 Mary Street Surry Hills NSW

- * Approx. 107sqm plus a balcony
- * High ceiling
- * Large open plan office
- * Private internal modern kitchen, bathroom and shower
- * Less than a minute walk to Central Station, light rail and bus stop
- * Car space if required - \$500 plus GST per month

Price : \$5,800 plus GST per month
Building Size : 107 sqm
View : <https://www.drakeproperty.com/lease/nsw/eastern-suburbs/surry-hills/commercial/offices/7856924>

Please call David on 0492 929 791 for inspections.



SUITE 1/21 MARY STREET, SURRY HILLS

This floor plan is for marketing purposes only. Dimensions and layout are approximate. V-Mark gives no guarantee or warranty over the accuracy of this plan.



INTERNAL AREA:	109M ²
EXTERNAL AREA:	27M ²
TOTAL AREA:	136M ²