

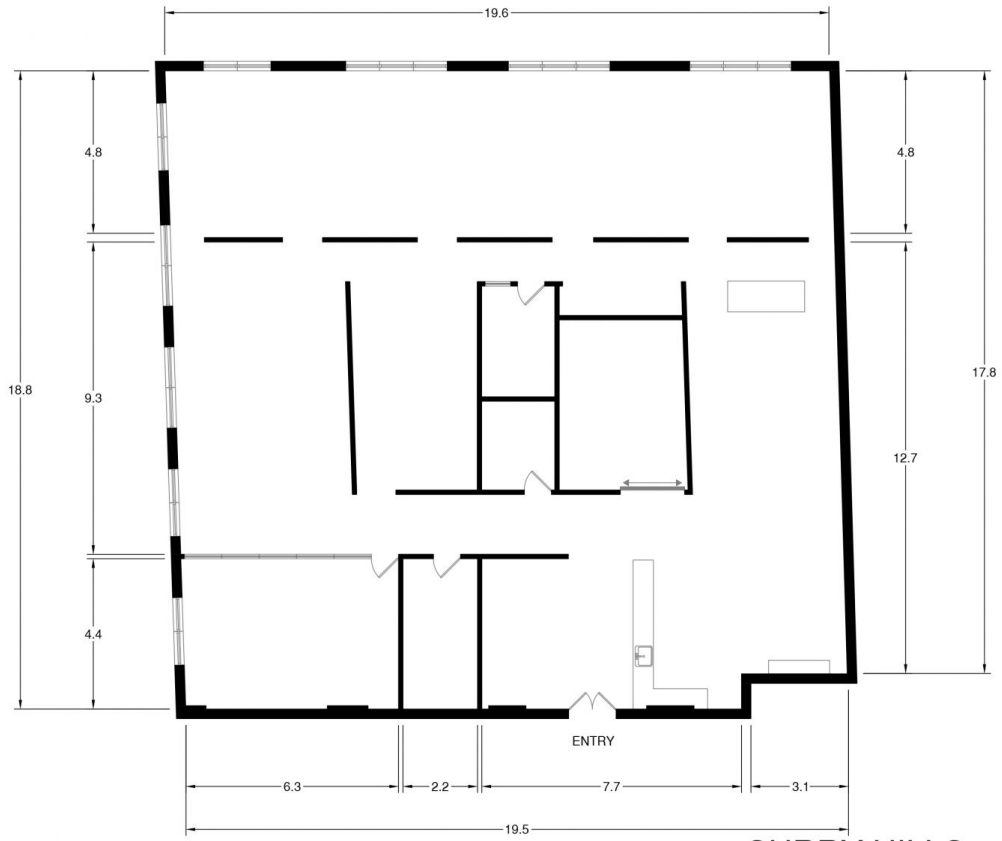


Level 6/3-4/2-12 Foveaux Street Surry Hills NSW

2 - 12 Foveaux Street is a converted warehouse style office building located at the corner of Mary Street close to Central Station. The building offers on - site building management and excellent proximity to public transport, cafes, bars and eateries

Price : \$19,900 plus GST per month
Building Size : 360 sqm
View : <https://www.drakeproperty.com/lease/nsw/eastern-suburbs/surry-hills/commercial/offices/7856783>

- * Extra High ceilings
- * Natural Light
- * Polished Timber Floor
- * A minute's walk from Central station
- * Close to all restaurants and bars
- * 360 m2 on level 6



SURRY HILLS
SUITES 3-4, LEVEL 6, 2-12 FOVEAUX STREET
 *INTERNAL FLOOR AREA APPROX 366m²

*PLANS SHOWN ONLY INDICATIVE OF LAYOUT. DIMENSIONS ARE APPROXIMATE.
 Floor plan supplied by V-Mark Design Pty Ltd. This floor plan is provided for indicative purposes only.
 Measurements are approximate and not to scale. The vendor, agency and supplier will accept no liability for its accuracy. Interested parties are advised to make their own independent enquiries.