

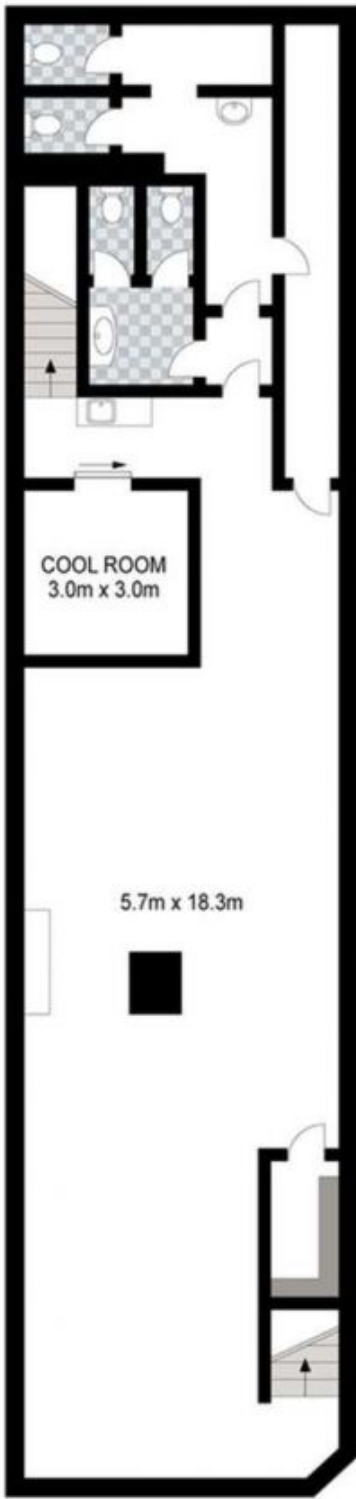
760 George Street Sydney NSW

- * Prime George Street Exposure
- * Ground & Underground comprise approx. 280sqm
- * Level One comprises approx. 140sqm
- * Food Lift, Exhaust, Grease Trap & High-capacity Stove installed
- * Two Cool Rooms, Two Toilets, Disable toilet
- * 7 days, 10am-2am approved business hours
- * Permitted Capacity of 110 persons
- * Rear Loading area accessible from Parker Lane

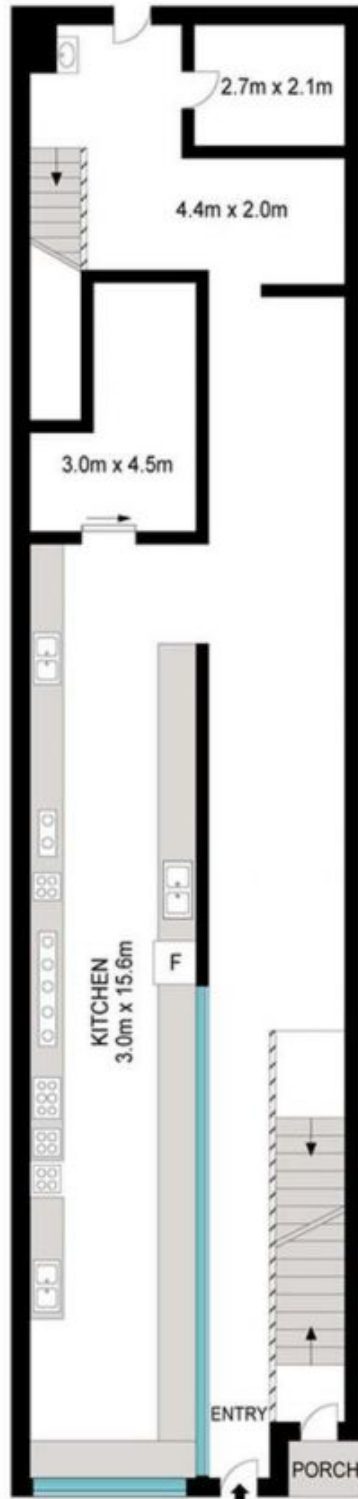
Price : Contact Agent
Building Size : 420 sqm
View : <https://www.drakeproperty.com/lease/nsw/sydney-city/sydney/commercial/retail/7744108>

760 George Street is Located at the Southern end of George Street.
 Within close proximity to Central Train & Bus Station, Haymarket, Chinatown and University of Technology Sydney.

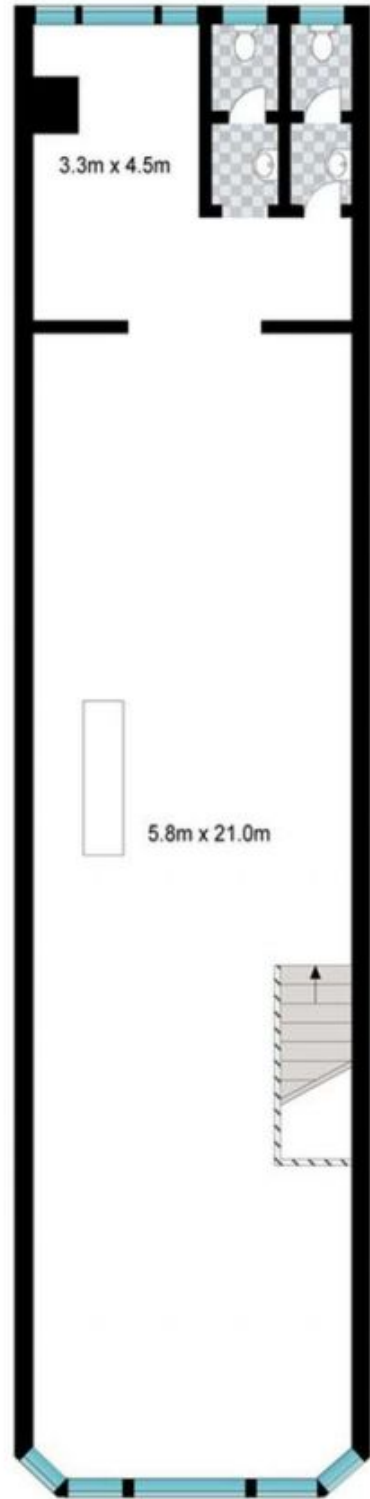
For further information or arranging inspections, please ring



LOWER GROUND FLOOR



GROUND FLOOR



FIRST FLOOR



Scale in metres. Indicative only. Dimensions are approximate. All information contained herein is gathered from sources we believe to be reliable. However we cannot guarantee its accuracy and interested persons should rely on their own enquiries.



760 George Street, Haymarket