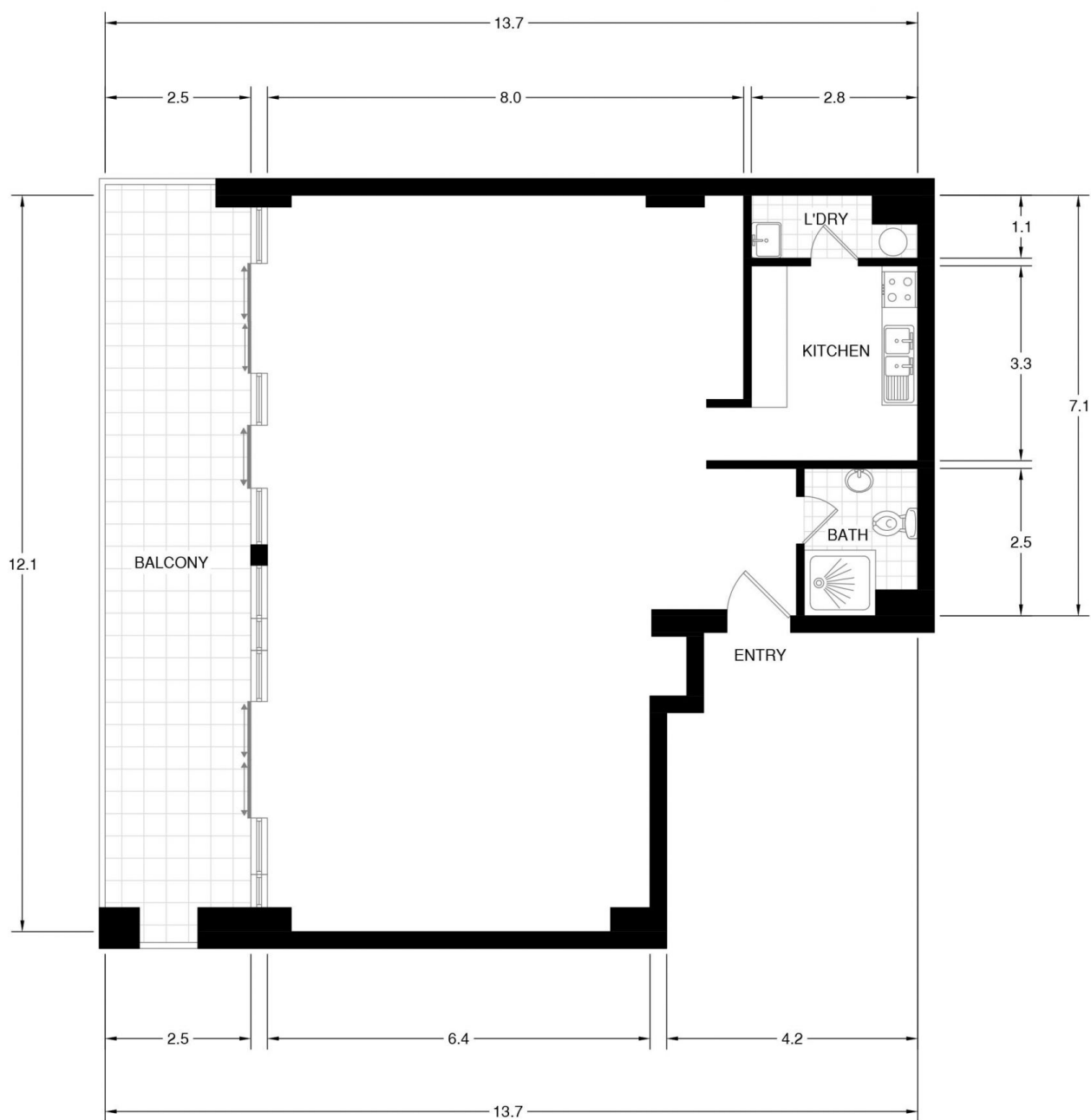


Level 1/3/21 Mary Street Surry Hills NSW

- * Approx. 113sqm plus a balcony
- * High ceiling
- * Large open plan office
- * Private internal modern kitchen, bathroom and shower
- * Less than a minute walk to Central Station, light rail and bus stop
- * Car space if required - \$500 plus GST per month

Price : \$6,400 plus GST per month
Building Size : 113 sqm
View : <https://www.drakeproperty.com/lease/nsw/eastern-suburbs/surry-hills/commercial/offices/7674667>

Please contact David on 0492 929 791 for inspections or more information.



SURRY HILLS

UNIT 3 LEVEL 1/21 MARY STREET

*INTERNAL FLOOR AREA APPROX 113m²

*PLANS SHOWN ONLY INDICATIVE OF LAYOUT. DIMENSIONS ARE APPROXIMATE.

Floor plan supplied by V-Mark Design Pty Ltd. This floor plan is provided for indicative purposes only.

Measurements are approximate and not to scale. The vendor, agency and supplier will accept no liability for its accuracy. Interested parties are advised to make their own independent enquiries.