

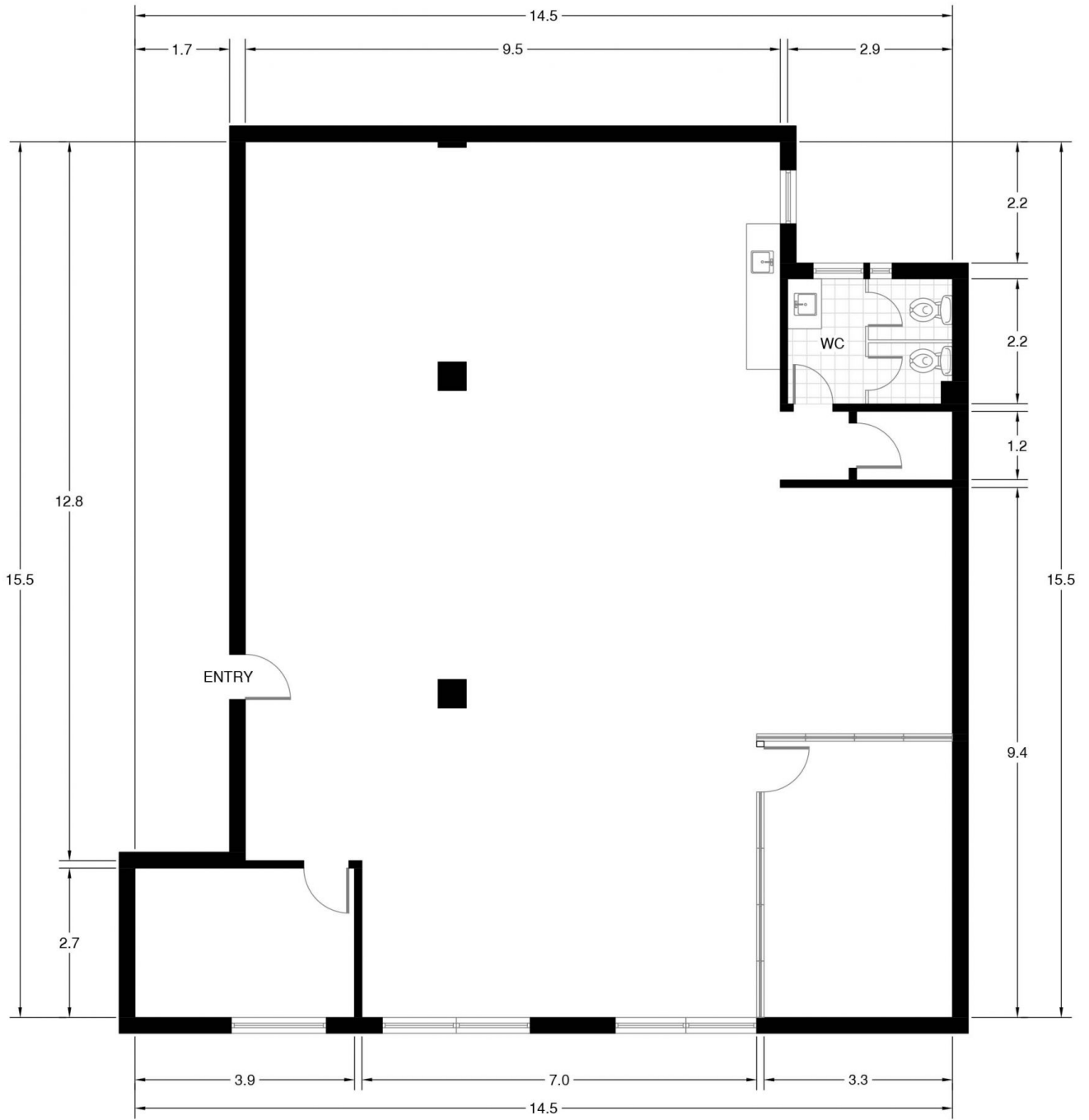


Level 3/1/104-112 Commonwealth Street Surry Hills NSW

- * Extra High ceilings
- * Ample Natural Light
- * Boutique and Creative Space
- * Two Partitioned Rooms, Open Area and Bathroom
- * Polished Timber Floor
- * Vibrant urban lifestyle

Price : Contact Agent
Building Size : 192 sqm
View : <https://www.drakeproperty.com/lease/nsw/eastern-suburbs/surry-hills/commercial/offices/7674661>

104 Commonwealth is Located in the Heart of Surry Hills, within walking distance to bustling Surry Hills, CBD and Central Station.



SURRY HILLS

SUITE 1 LEVEL 3/104-106 COMMONWEALTH STREET

*INTERNAL FLOOR AREA APPROX 192m²



*PLANS SHOWN ONLY INDICATIVE OF LAYOUT. DIMENSIONS ARE APPROXIMATE.

Floor plan supplied by V-Mark Design Pty Ltd. This floor plan is provided for indicative purposes only.

Measurements are approximate and not to scale. The vendor, agency and supplier will accept no liability for its accuracy. Interested parties are advised to make their own independent enquiries.