



Level 5/54/650 George Street Street Sydney NSW

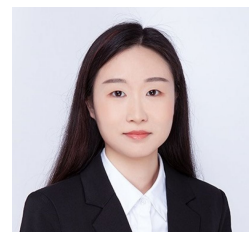
- * Approx. 53m2
- * Open plan
- * Kitchen with water basin
- * Ideal for cosmetic, medical, dental or other similar usage

Price : Contract Agent
Building Size : 53 sqm
View : <https://www.drakeproperty.com/lease/nsw/sydney-city/sydney/commercial/offices/7097061>

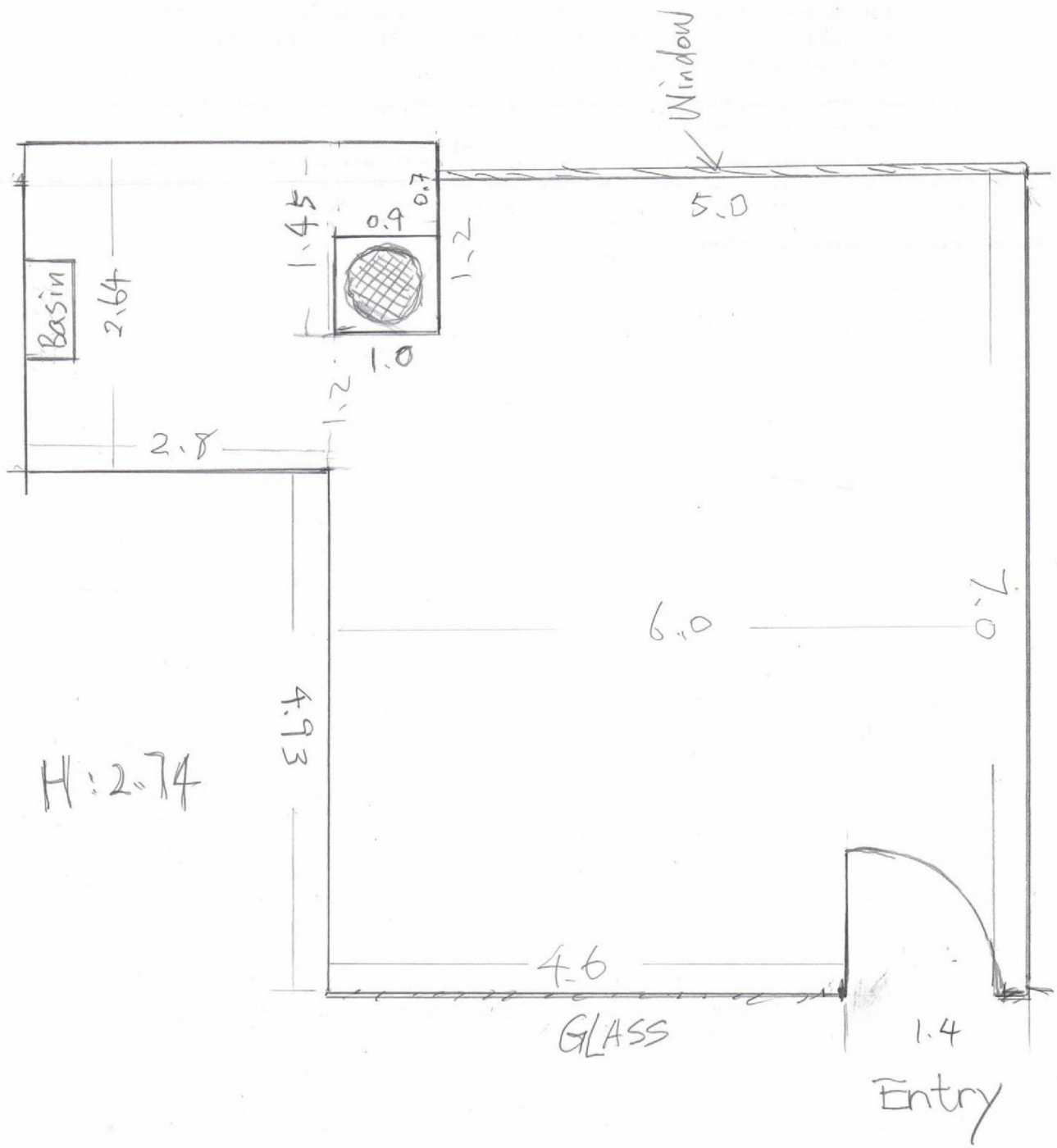
Contemporary style, modern office in World Square is offered for lease. With close proximity to Town Hall, Museum, Local Courts and China Town, it will appeal to small or medium size, professional practice searching for quality and convenience.

Description

650 George Street is a five levels building, part of the prestigious World Square retail and commercial development. High quality finishes include two lifts, security access, male and female amenities with shower facilities.



Joy Huang
02 9283 6280



H: 2.74

5A/650 George St