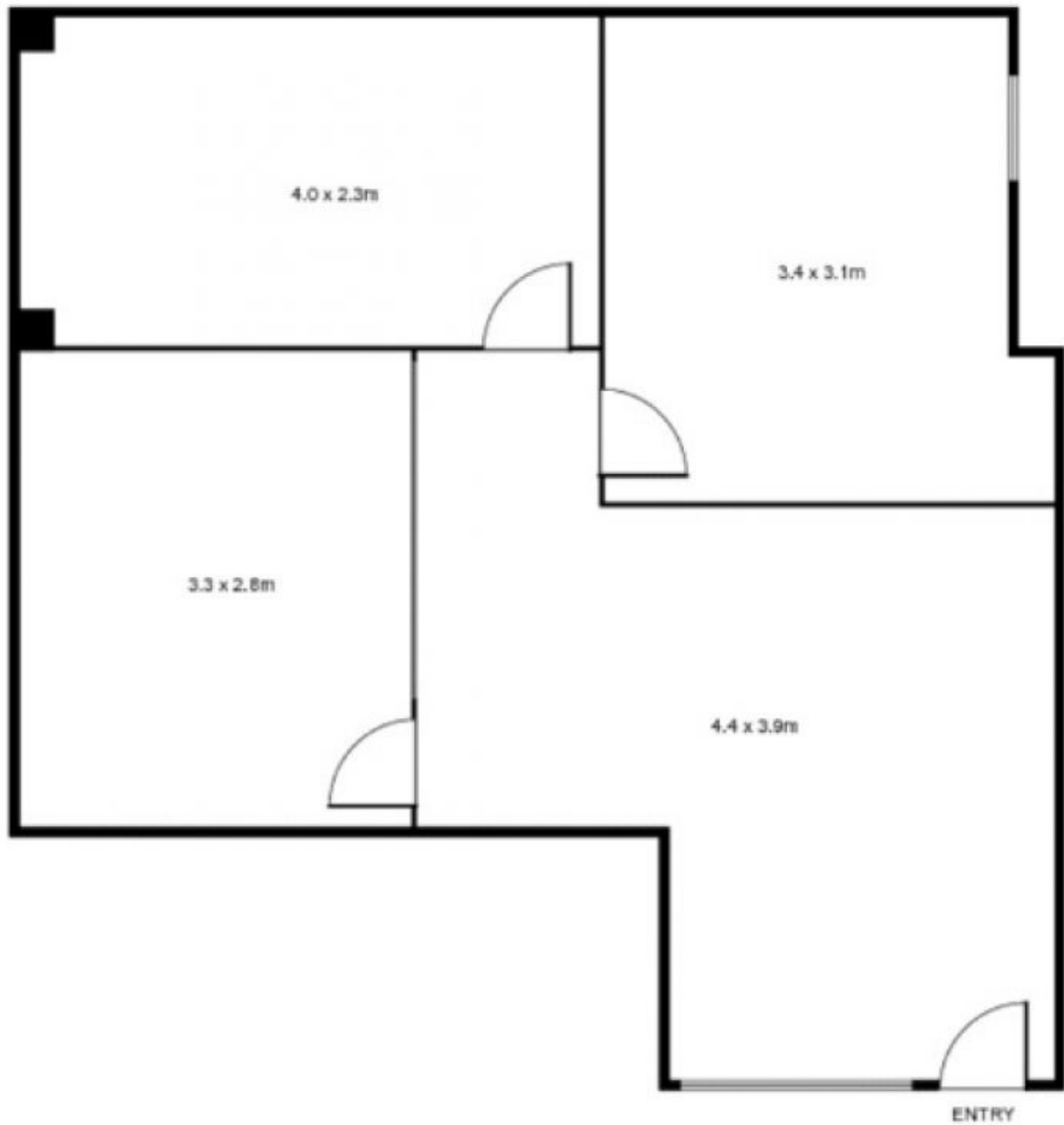


**Level 7/701/12 O'Connell Street Sydney NSW**

- \* Approx 45m2
- \* Fitted with 3 rooms and reception area
- \* Partially furnished
- \* Sublease to 27 March 2019
- \* Kitchenette and toilets in common area
- \* Charmingly presented lobby
- \* Close to the upgraded Wynyard Station, Martin Place and Circular Quay

**Building Size** : 45 sqm  
**Land Size** : 45 sqm  
**View** : <https://www.drakeproperty.com/lease/nsw/sydney-city/sydney/commercial/offices/5723828>

Manufacturers House is located on the eastern side of O'Connell Street adjoining 1 Bligh Street, close to Australia Square and cnr Hunter and Pitt Streets - the heart of the financial centre.



Suite 701, Level 7, 12-14 O'Connell Street, SYDNEY



This floor plan is intended as a guide only. Layout dimensions are approximate only. No representations or warranties of any nature whatsoever are given or intended.