

**270/398 Pitt Street Sydney NSW**

This property is located on the eastern side of Pitt Street and is within five minutes walk of Central Station. It is in the vicinity of the Law Courts and Chinatown.

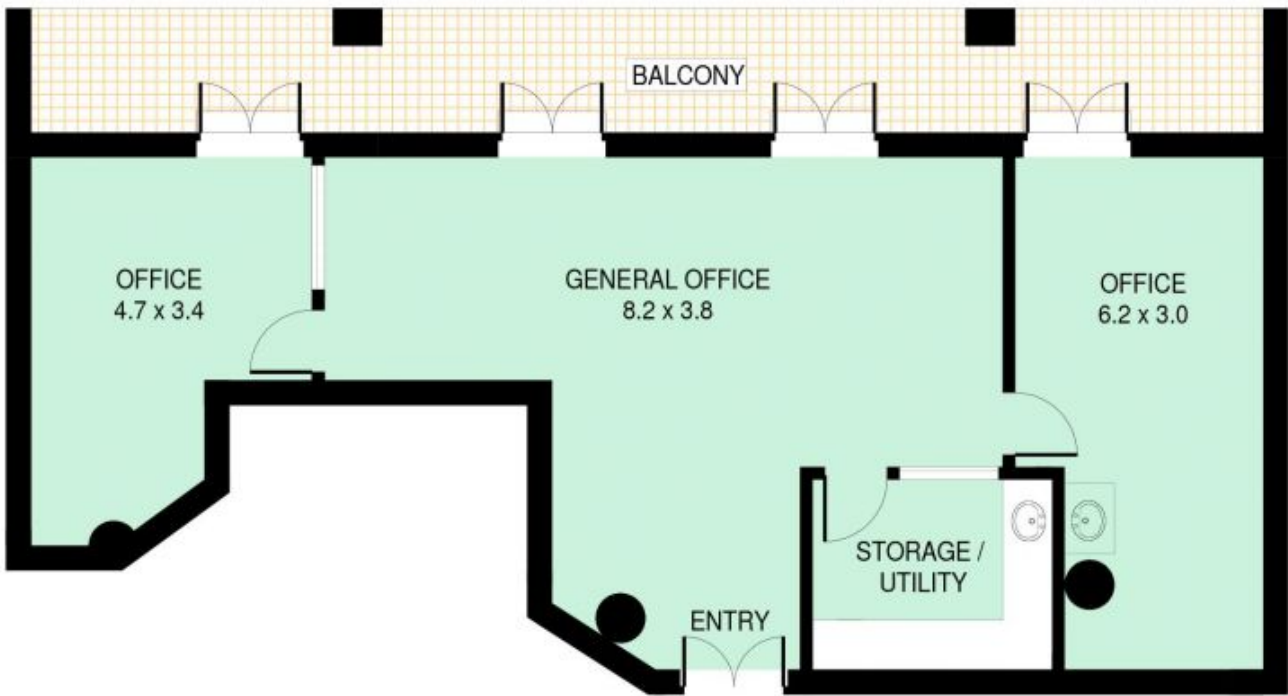
- Open plan with 2 offices
- One office with an internal sink
- Internal kitchenette
- Large balcony
- Floor boards

Ideal for Medical or Beauty, Facials, Cosmetic or General Office

**Building Size** : 87 sqm  
**View** : <https://www.drakeproperty.com/lease/nsw/sydney-city/sydney/commercial/offices/5723810>



**Nicholas Drake**  
02 9283 6280



## Suite 270 / 398 Pitt Street, Sydney

This information is not to be relied upon.  
It is strictly for marketing & illustration purposes only.  
All measurements are approximate. Not to scale.  
No liability accepted.



You must rely on your own inquiries and seek advice from your solicitor.(ID349486)